



2 Markham Crescent YO31 8NS

£1,400 PCM

2



1



1

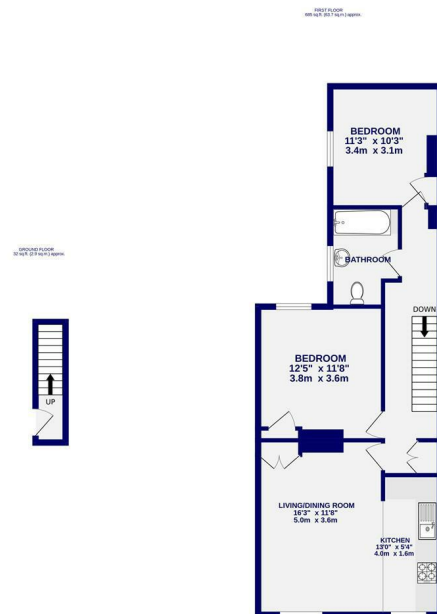


C



A recently refurbished two bedroom flat, located very close to the hospital and within easy walking distance of the city centre. The property is offered furnished and enjoys many original period features but with a modern feel throughout. Accommodation comprises of entrance hall with stairs leading to a large open landing; open plan kitchen living area with washer, electric oven, hob & fridge freezer; two double bedrooms and modern bathroom with shower over bath. On street permit parking.

Available Now / 6+ Month Tenancy / Council Tax Band B / EPC Rating D / Deposit £1500



TOTAL FLOOR AREA: 717 sq ft (66.6 sq m) approx.  
While every attempt has been made to ensure the accuracy of the foregoing measurements of rooms and any other areas are approximate. It is advised to the plan the measurements are taken from the internal face of the walls and are not intended to be used for any other purpose. The plan is for illustrative purposes only and should be used as such by any prospective purchaser. The vendor, agents and agents shown have not been tested and no guarantee as to their operation.  
Made with Mapbox 12/2020



Ashtons Lettings

01904 731404

lettings@ashtonsnet.com

